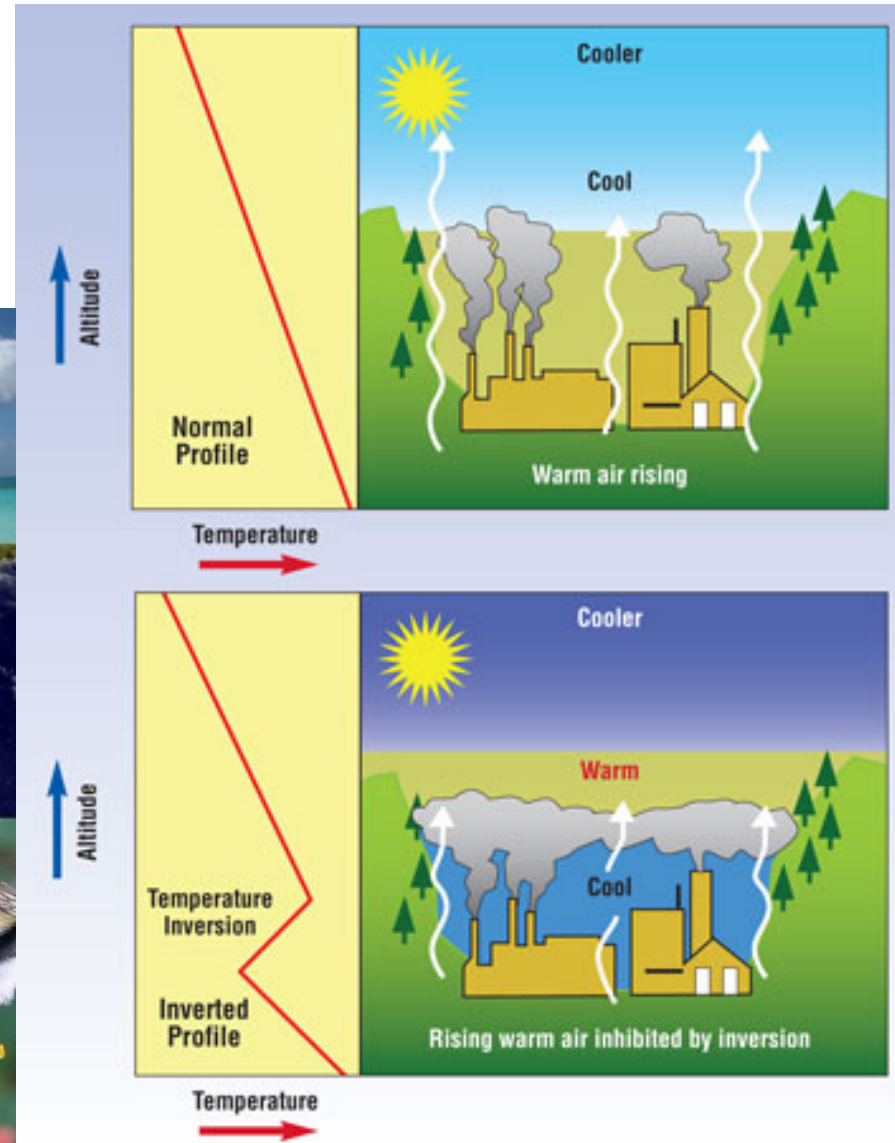
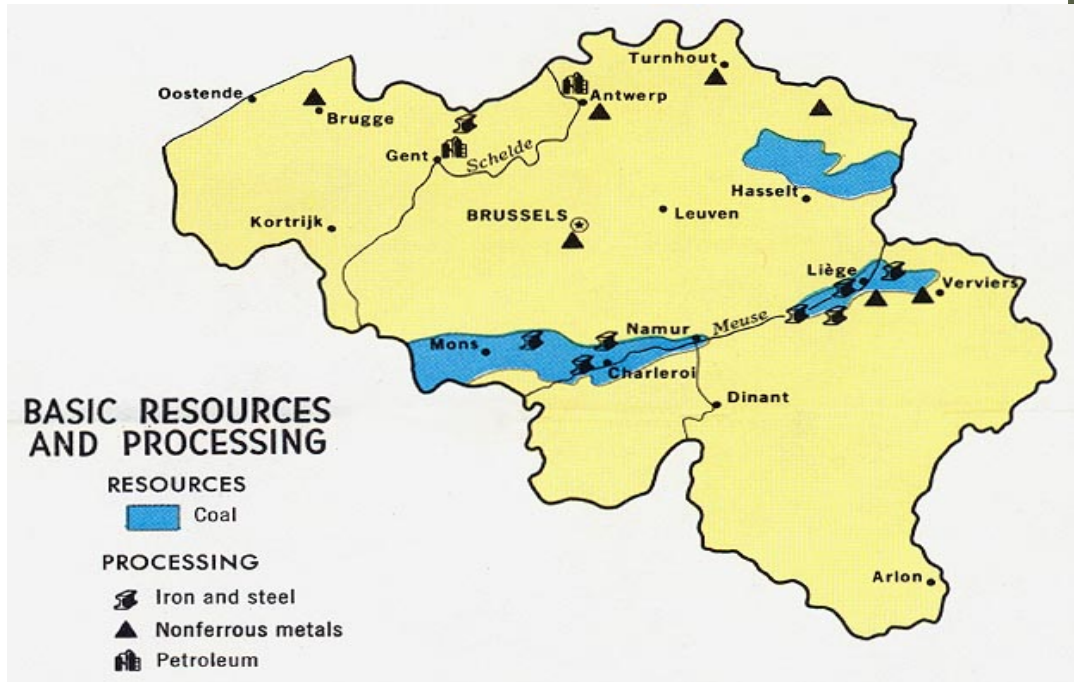


# METEROLOGISTS

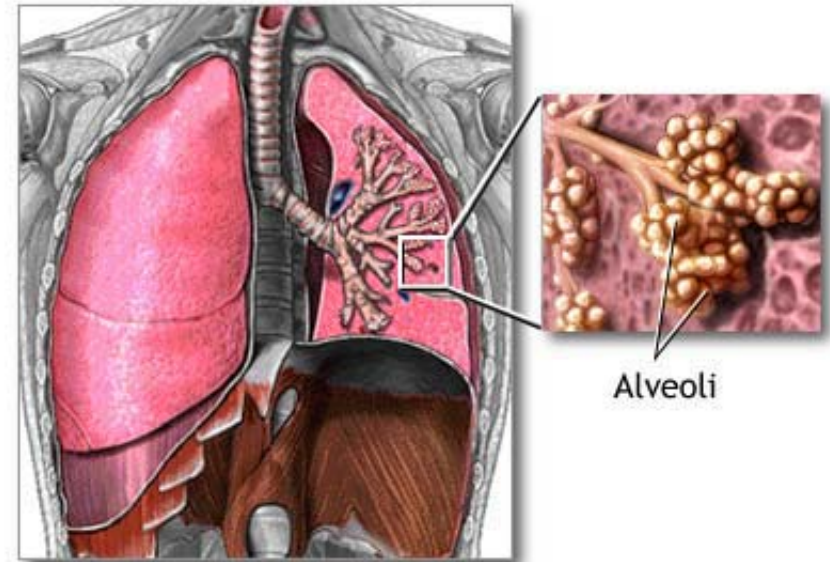
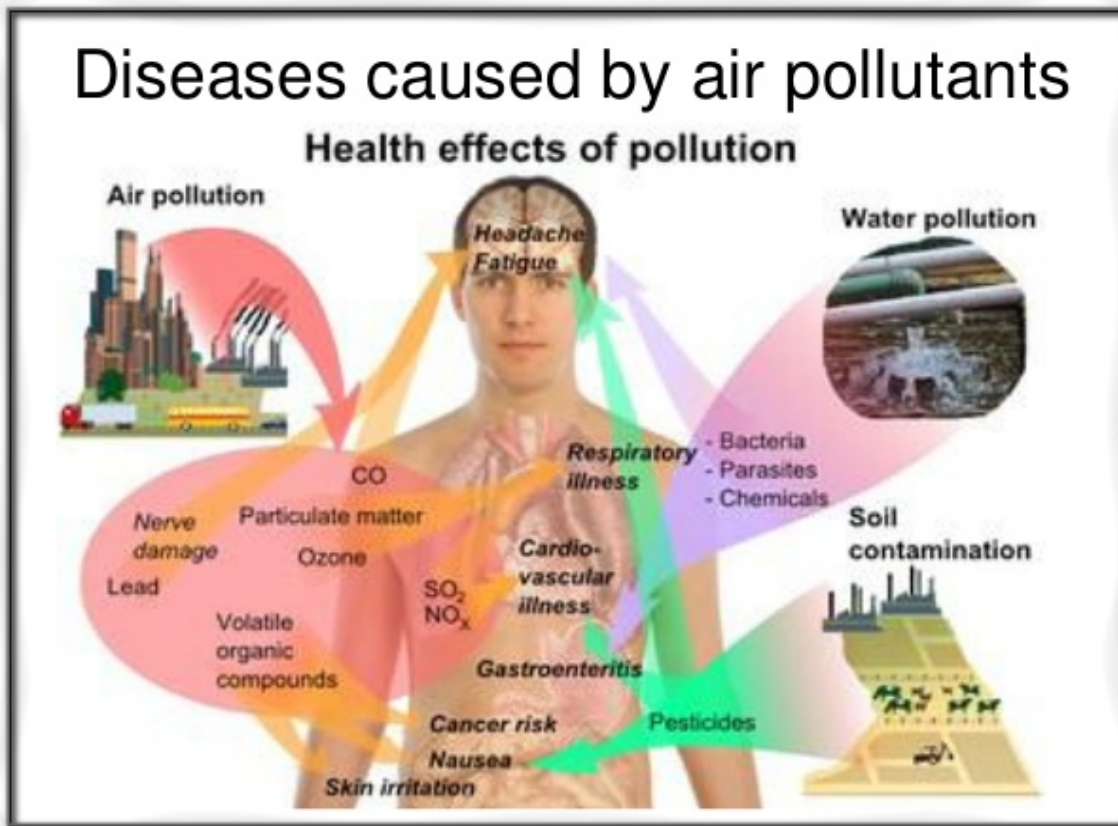


# GEOLOGISTS



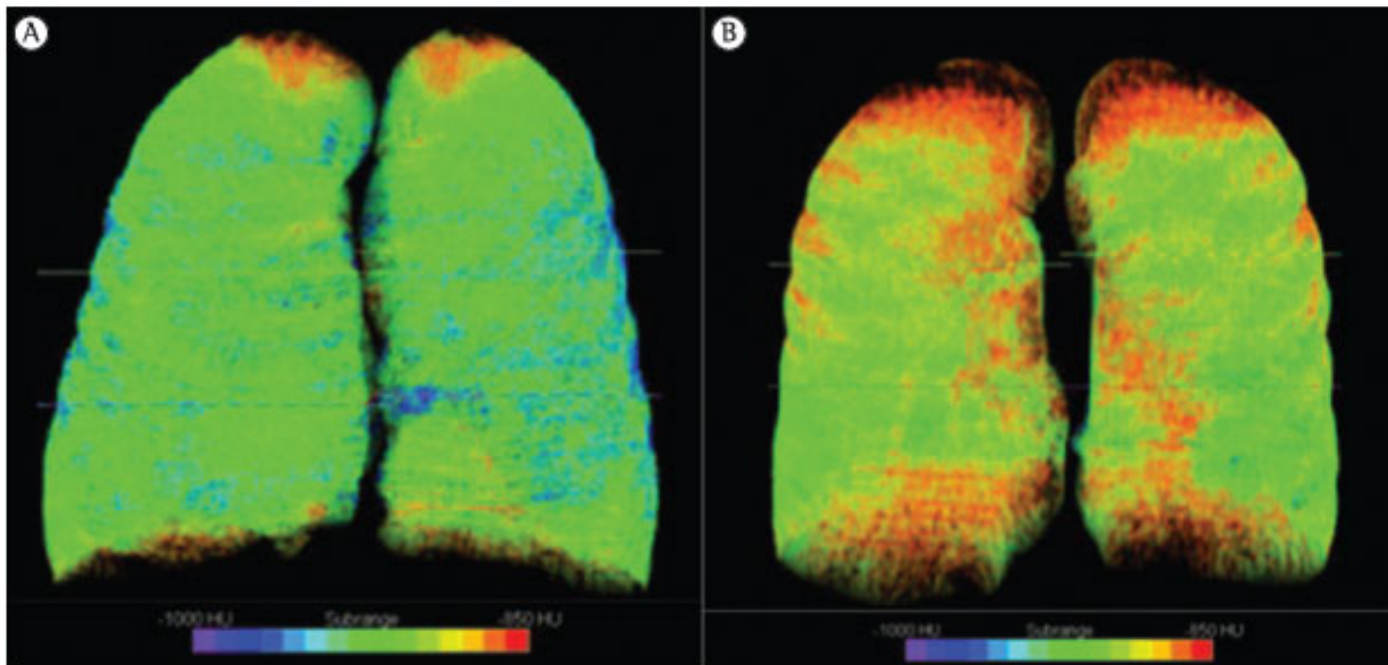


# MED DOCTORS (AUTOPSIES)



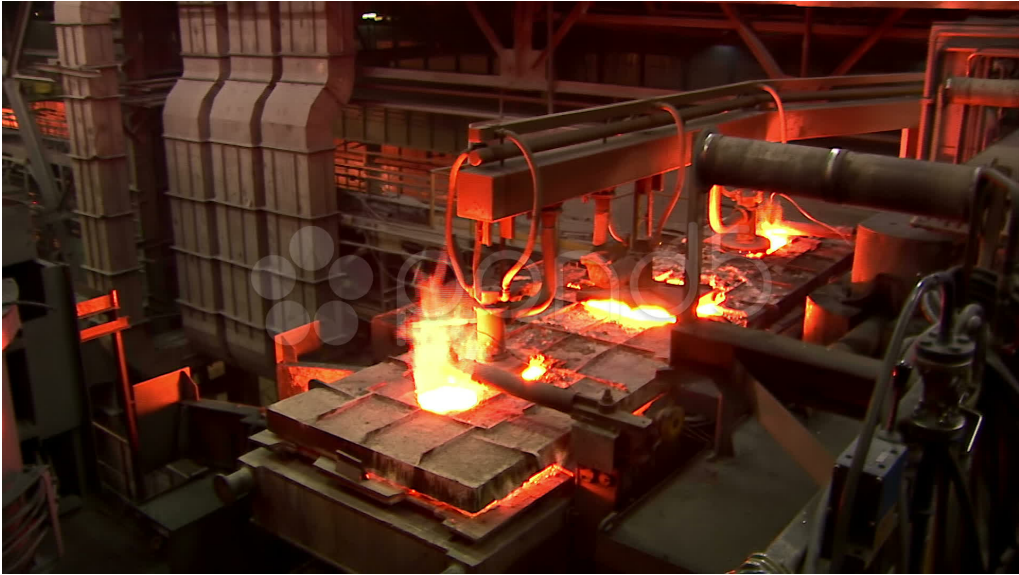
Younger lungs

# MED DOCTORS (ILL PATIENTS)



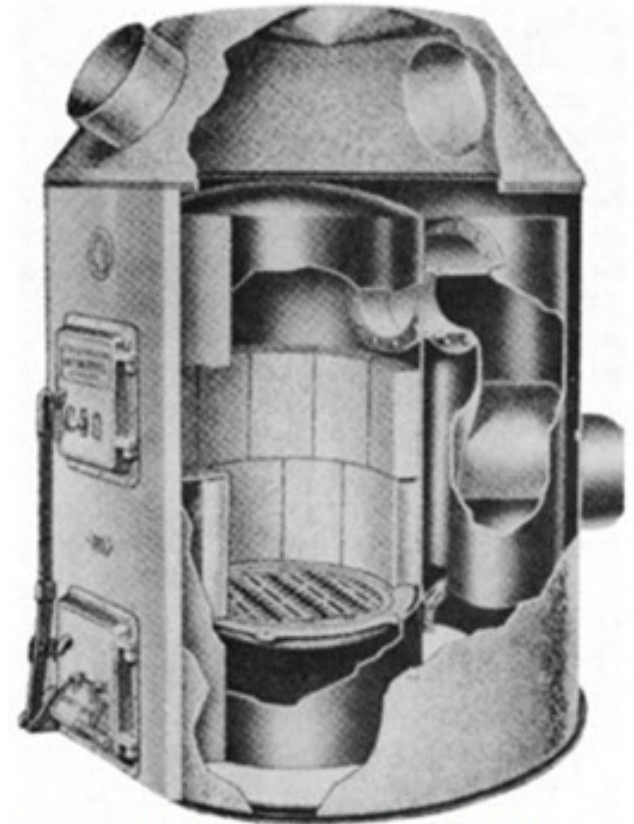
**Figure 3** – Three-dimensional CT scan showing (in A) areas of increased small airway volume, known as senile emphysema (blue areas), in an 85-year-old patient. Note the homogeneous distribution of emphysematous areas. In B, three-dimensional CT scan of a healthy 23-year-old patient. Note that there are no areas suggestive of pulmonary emphysema.

# INDUSTRIALISTS

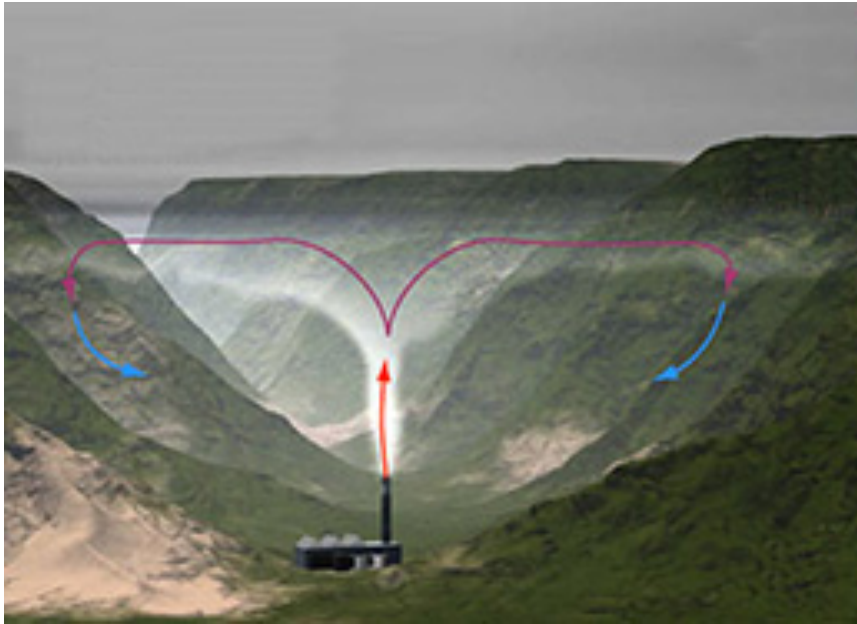




# CHEMISTS



**Figure 13-12** Cutaway view of a coal-fired furnace showing grate and combustion chamber details.  
(Courtesy Oneida Heater Co., Inc.)



Cold air

Warm layer

Cool air